

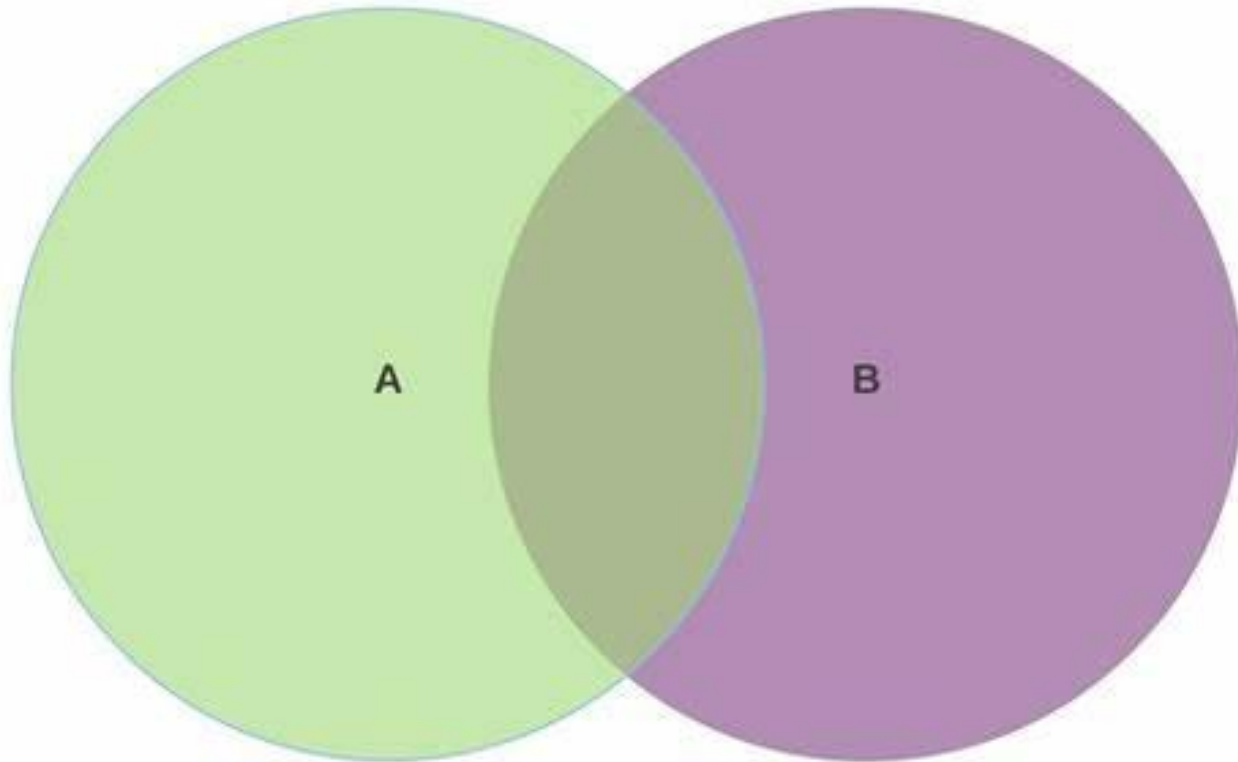
An Introduction to the PYP

Family Workshop

**The most important
thing for my child to
learn in school is**



At your tables, complete the Venn diagram showing characteristics of learning at school A) THEN - when you attended school, versus B) NOW - when your child attends school. 5 min



The IB's mission

The International Baccalaureate aims to develop inquiring, knowledgeable and caring young people who help to **create a better and more peaceful world** through intercultural understanding and respect.

To this end the organization works with schools, governments and international organizations to develop challenging programmes of international education and rigorous assessment.

These programmes encourage students across the world to become **active, compassionate and lifelong learners** who understand that other people, with their differences, can also be right.

Source: p.4., Learning and teaching, From principles into practice

PYP



MYP



DP



The PYP is...



Student centered



Rigorous



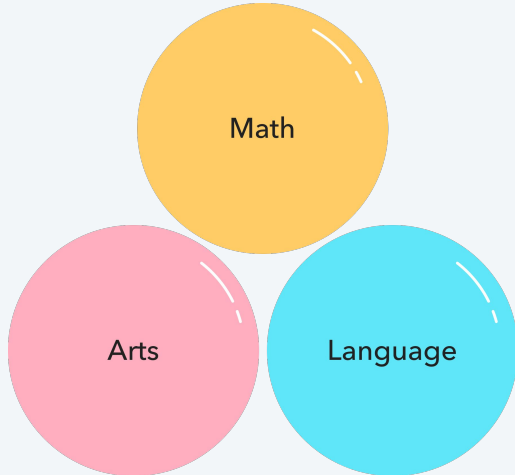
Based on best teaching
and learning practices



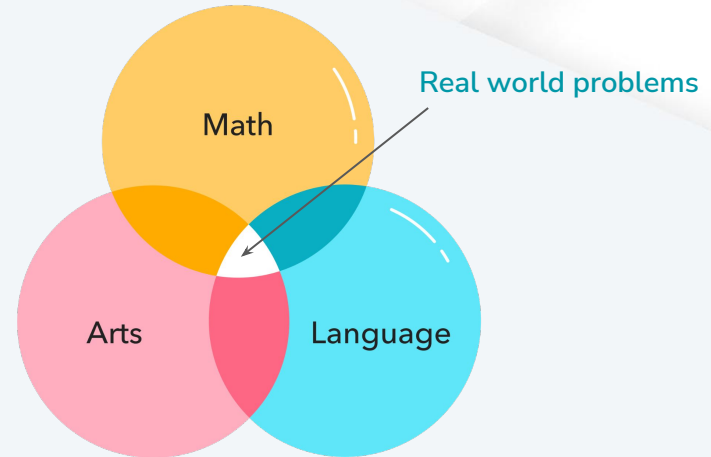
The PYP is taught in a transdisciplinary way.

What does transdisciplinary mean?

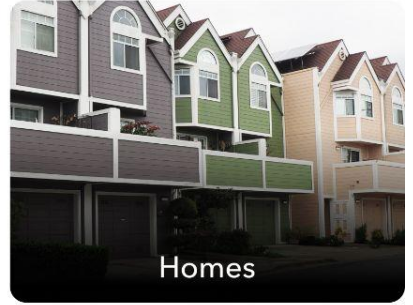
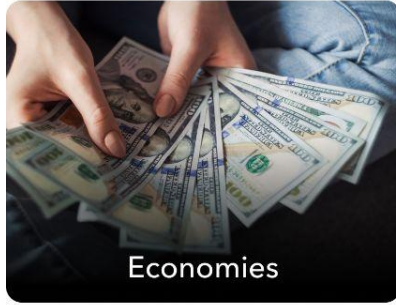
Traditional learning



Transdisciplinary learning



Transdisciplinary themes (Real world problems)



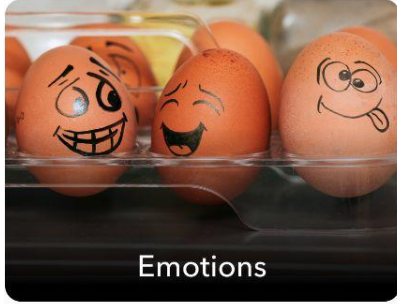
How We Organize Ourselves



Where We are In Place and Time



Transdisciplinary themes (Real world problems)



Emotions



Creativity



Resources



Equity



How We Express Ourselves



Sharing the Planet



Culture



Beliefs

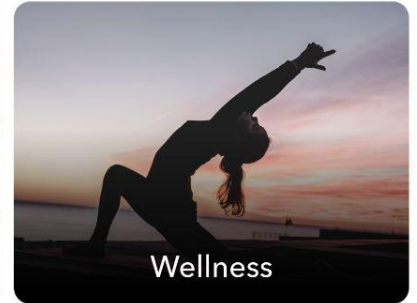
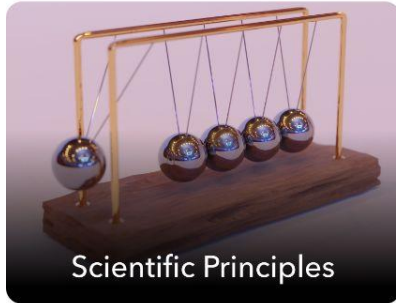
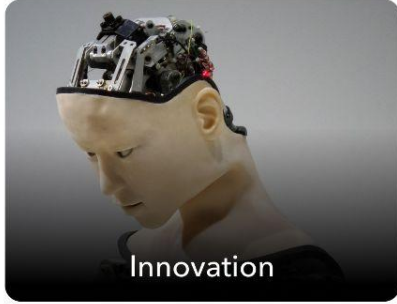


Conflict



Rights & Responsibility

Transdisciplinary themes (Real world problems)



Year 3 - Unit 1

What is our purpose?

- To inquire into the following:

TRANSDISCIPLINARY THEME: How the World Works

An inquiry into the natural world and its laws; the interaction between the natural world (physical and biological) and human societies; how humans use their understanding of scientific principles; the impact of scientific and technological advances on society and on the environment.

CENTRAL IDEA: The production of energy has an impact on our lives and on the environment.

Art and Design: Plan, design and execute houses. Interior design.

Math: measure and calculate distances in model houses to accommodate planned design.

Field trips: Three Little Pigs play at the theater. Aurelium science museum.

Collaboration with: Slovak - reading and writing different versions of the story "Three Little Pigs".

Science: experimenting with circuits.



Renewable energy

Testing different
prototypes



Art - interior
design elements.
Color. Mini
models
Math -
measurements



Final Product - reflecting agency

2020:



2021:



Literacy link final product:

2020:



2021:



Field trips:

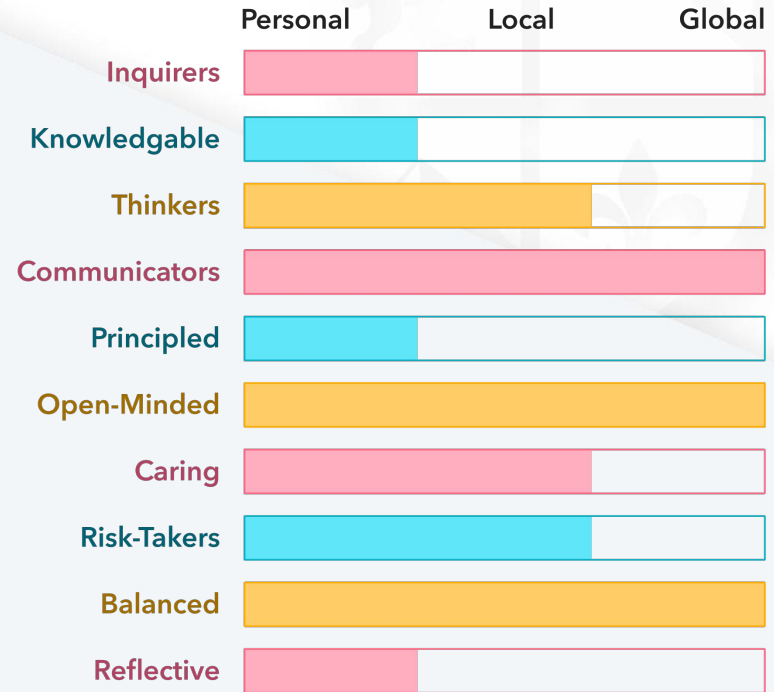
2020: Three Little Pigs play at the theater



2021: Aurelium Science Museum



What is learner profile?



What is learner profile?



	Personal	Local	Global
Inquirers			
Knowledgable			
Thinkers			
Communicators			
Principled			
Open-Minded			
Caring			
Risk-Takers			
Balanced			
Reflective			



PYP students take action

Students show understanding by taking action to make the world a better place



Participation



Advocacy



Social Justice



Social Entrepreneurship



Lifestyle Choices

Becoming a PYP family



Use the learner
profile words at
home



Know your
child's central
idea- ask them
about it!



Go on trips
together or talk
about about the
concepts they
are learning in
class



Volunteer in
class or help to
organize a field
trip



Look for
examples or
opportunities to
take action in
your local
community!