

# POPULATION DYNAMICS OF JAPAN



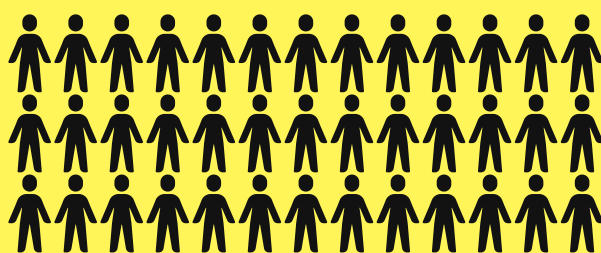
Japan is a quite small country, but it has a lot of people

## Main content

# 125.8 MILLION

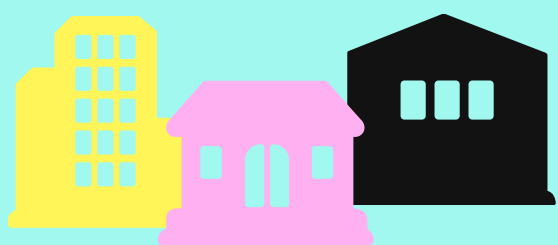
### Population size

There are 125.8 million people in a small country--- Japan.



### Demographics

# 336/KM

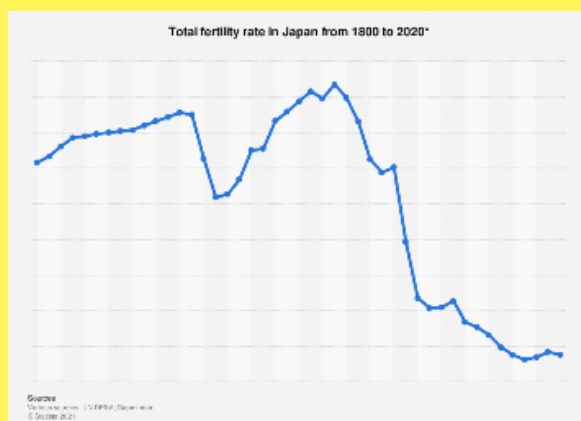


The population density of Japan is about 336 people per square kilometer, which is very crowded.

# 1.36 BIRTHS PER WOMAN

### Birth rate

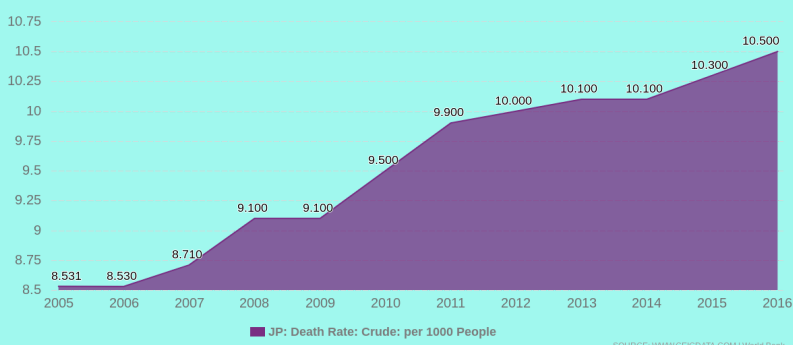
Japan's current population growth rate is directly proportional, which proves that Japan's population is still rising, but this data has decreased a lot compared with Japan in the 20th century, but even so, Japan will still be very crowded.



### Death rate

# 10.9 PER 1,000 PEOPLE

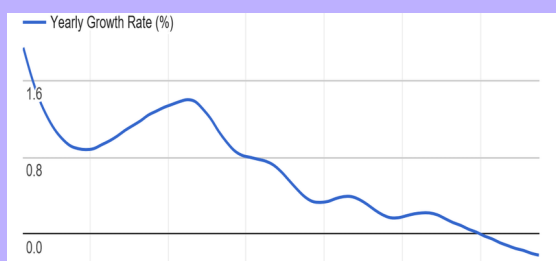
Right now, the death rate of Japan is getting higher and higher because Japan has already entered the stage of aging. That's the reason why the death rate of Japan is getting higher and higher.



# 0.3% ANNUAL CHANGE

### Population growth rate

As you can see, the population growth rate is getting lower and lower, because most of young Japanese don't want to have children, they don't have time to look after them. At the same time, the Japanese government is also encouraging young people to have children to help Japan get rid of the serious problem of aging

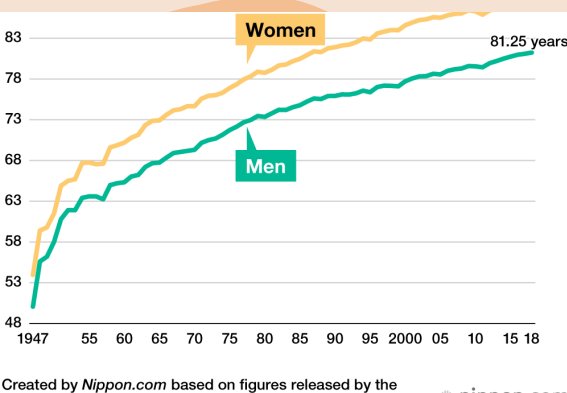


## Doubling time of the population



Now it will take 233 years for Japan's population to double, which is slow. This is also because Japan's population is aging seriously, coupled with more natural disasters, the mortality rate is naturally high. That's why it took so long to double.

## DOUBLING IN 233 YEARS



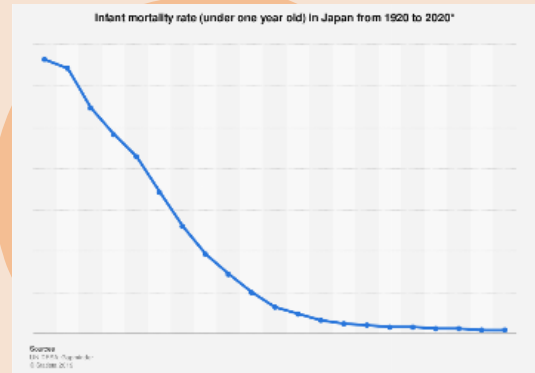
## 84.36 YEARS

Japan's life expectancy is relatively old, so now Japan is also in a period of population aging

## Life expectancy

## 1.644 DEATHS PER 1000 LIVE BIRTHS

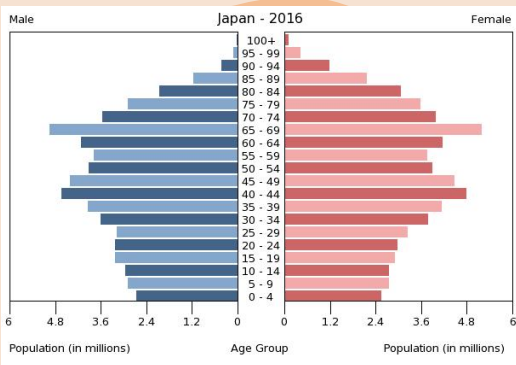
Japan's newborn infant mortality rate is gradually decreasing, and the Japanese government can also take this to change the current situation of population aging



## Infant mortality rate

## POPULATION PYRAMID

This intuitively tells us the distribution of each age group today. It's contracting.



## SUM UP

Now there are some problems in the management of the Japanese government's population policy and Japan's population structure. The reason for this structure is that with the development of Japan's economy, the aging and fewer children of Japan's population are becoming more and more serious, and the mortality rate is higher than the world average, which leads to the sharp decline of Japan's population. It is suggested that the government should open the multiple birth policy, strengthen the management in the event of disaster and reduce losses.



By David

## SOURCES

- <https://www.worldometers.info/world-population/japan-population/>
- <https://www.worldometers.info/demographics/japan-demographics/>
- <https://cn.knoema.com/>
- <https://www.worldometers.info/world-population/japan-population/>